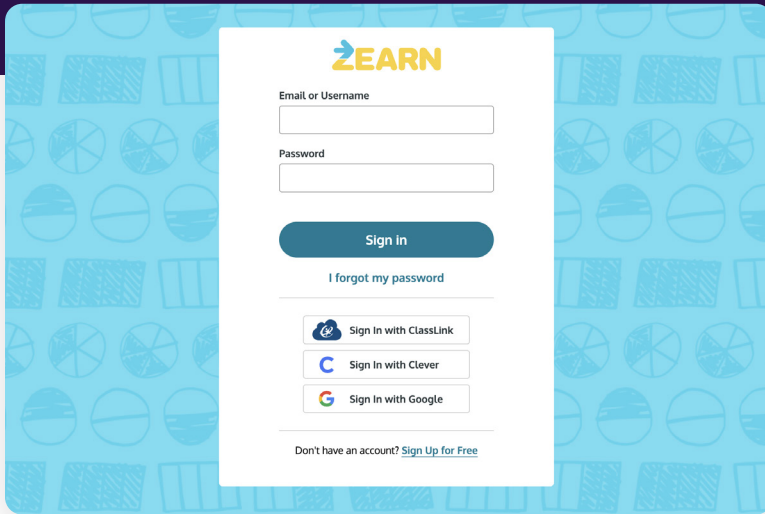




Navigating Your Classroom LiveView

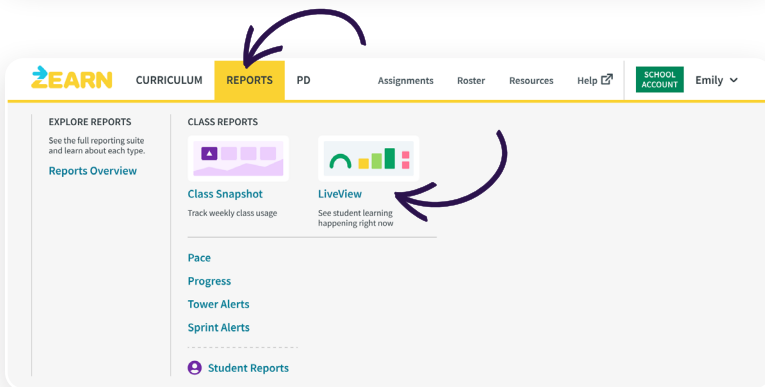
Use the LiveView to support students during Zearn time



1

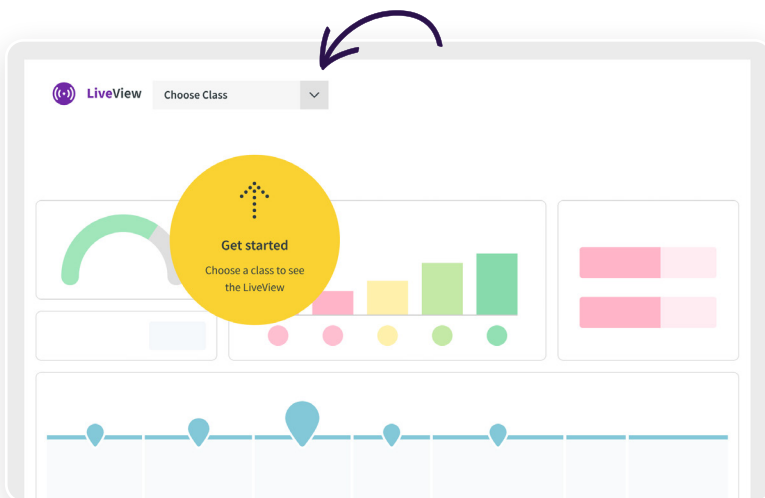
Sign in at zearn.org.

Zearn's platform offers integration with **Clever and Classlink** for easy sign on.



2

Click on the **Reports** tab and select **LiveView**.



3

Select a **class** to view live student activity.

4 The Class tab shows:

Who is **signed in** and ready to Zearn

How many **lessons** students have completed this week

LiveView is filtered to show only signed-in students by default. You can uncheck this box to show all students, including offline students.

How much **time** students have spent learning on Zearn this week

Which students have active **Tower** or **Time** alerts and may need support

What students are **working on** right now

5 The Students tab shows:

An **Active Tower Alert** means students are currently struggling to demonstrate mastery on a Tower of Power. Click the icon to see the severity of struggle and decide if a check-in is needed. Once they pass their current level of the Tower of Power, this alert will disappear.

A **Time Alert** means a student has been on the same activity longer than expected. You may want to check in to see if they need encouragement or support. Once they complete their activity, this alert will disappear.

Use **sorting** and **filters** to prioritize which students you see. Sort student cards by alert count, what content they are working on, and other options.

Click into **current lesson** to see activity progress

Click to see **total lessons** completed and **time** spent this week.