

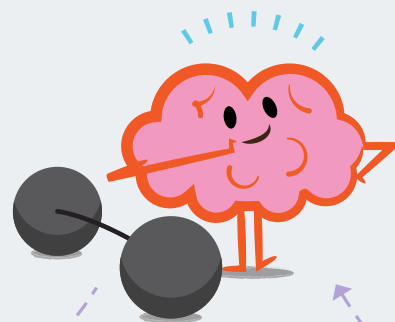
LOUISIANA MATH CHALLENGES



1

Log into your Zearn account

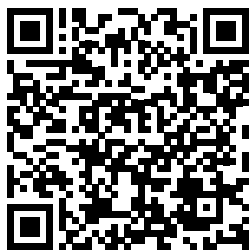
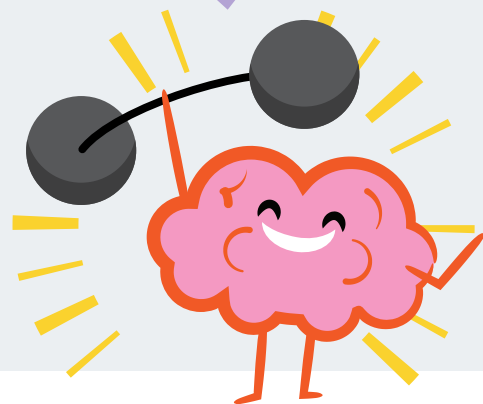
Students should log into Zearn and complete the lessons in the “Next Up” tab



2

Complete the target number of lessons!

Set a goal to complete 12 digital lessons



Want to help motivate your student to complete the challenge?

Here are tips for supporting your child’s learning with Zearn Math. You can also reach out to your child’s teacher for more information about their progress in the challenge.



Zearn is the 501(c)(3) nonprofit educational organization behind Zearn Math, the top-rated math learning platform used by 1 in 4 elementary-school students and by more than 1 million middle-school students nationwide.