

2020-2021 LEARNING RECOVERY

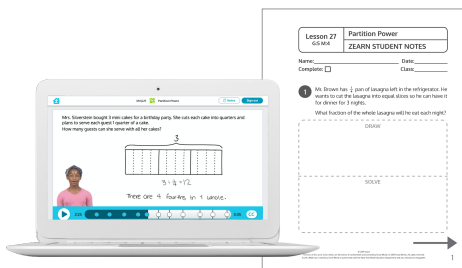
Grade 2 Diagnostic and Scope & Sequence

G1M6	G2M1	G2M2	G2M3	G2M4	G2M5	G2M6	G2M7	G2M8
------	------	------	------	------	------	------	------	------

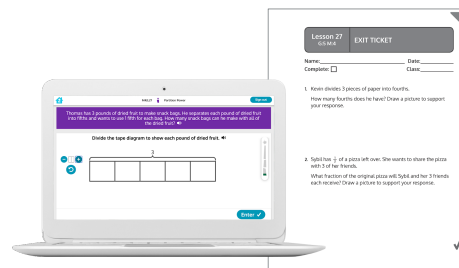
A revised scope and sequence for 2nd grade that integrates critical missed learning from 1st grade with grade-level work, includes an upfront diagnostic assessment mission, and adheres to the following design principles:

- **Student-first**, re-engage students in a learning community and provide space for teachers to focus on student’s social and emotional well-being.
- **Practical and actionable**, provide teachers with a comprehensive, usable plan that can be adapted to various forms of hybrid-learning.
- **Efficient and coherent**, ensure students continue to understand math concepts in an intuitive and tangible way.

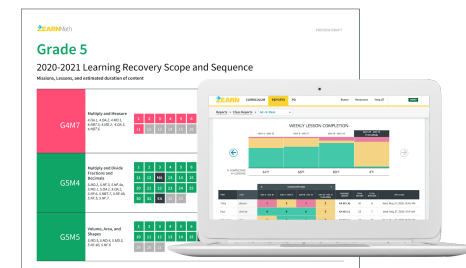
Zearn Math helps teachers and administrators support students with accessing the revised 2nd grade scope and sequence by providing comprehensive materials, guidance and visibility.



Digital Lessons include built-in deep support on concepts from previous topics and grades



Upfront diagnostic assessment mission and ongoing formative assessments



Real-time reports and guidance to precisely track and identify student learning and struggle

Grade 2

2020-2021 Learning Recovery Scope and Sequence

Missions, Lessons, and estimated duration of content

Each Zearn Math digital lesson includes built-in, deep support on concepts from previous topics and grades, which allows for a coherent, manageable and efficient learning experience for all students. Zearn Math digital lessons diagnose unfinished learnings while supporting students to master grade-level content.

Mission Title	Lessons	Assessment	Total Lessons	Instruction Days																														
G1M6 Add and Subtract to 100 <i>1.OA.1, 1.NBT.1, 1.NBT.2a, 1.NBT.2c, 1.NBT.5, 1.NBT.6 1.NBT.4</i>	<table border="1"> <tr> <td>1</td><td>2</td><td>X</td><td>4</td><td>5</td><td>X</td><td>X</td><td>X</td><td>9</td><td>X</td> </tr> <tr> <td>11</td><td>12</td><td>13</td><td>14</td><td>15</td><td>16</td><td>X</td><td>18</td><td>19</td><td>20</td> </tr> <tr> <td>21</td><td>X</td><td>X</td><td>X</td><td>25</td><td>26</td><td>27</td><td>X</td><td>X</td><td>X</td> </tr> </table>	1	2	X	4	5	X	X	X	9	X	11	12	13	14	15	16	X	18	19	20	21	X	X	X	25	26	27	X	X	X	—	13	13
	1	2	X	4	5	X	X	X	9	X																								
	11	12	13	14	15	16	X	18	19	20																								
21	X	X	X	25	26	27	X	X	X																									
<p>Diagnostic Mission: Based on student performance in the diagnostic mission, teachers can instruct students who need additional support to complete the remaining G1M6 lessons. For further support, teachers can visit our Foundational Lesson Guidance.</p> <p>The place value work with numbers up to 100 in this mission will serve as an upfront diagnostic assessment to inform teacher-led instruction, support students with accessing the first mission of 2nd grade, and help identify individual students who may need additional support.</p> <p>Curriculum Study PD: Prior to teaching this module, complete the Overview Video and Small Group Lesson Video from G1M6 Curriculum Study Session (~30 minutes)</p>																																		

G2M1

Add and Subtract Friendly Numbers

2.OA.2, K.OA.3, K.OA.4,
K.NBT.1, 1.NBT.2b,
1.OA.5, 1.OA.6, 2.OA.1,
2.NBT.5, 1.NBT.4,
1.NBT.5, 1.NBT.6

1

2

3

4

5

6

7

8

EA

1 Assessment

8

9

Students work deeply with counting, composing and decomposing numbers up to 100, which prepares them to add and subtract flexibly in later missions.

Curriculum Study PD: Prior to teaching this module, complete the full G2M1 Curriculum Study Session — Overview, Fluency, Word Problem, Small Group Lessons (~60 minutes)

G2M2

Explore Length

2.MD.1, 2.MD.3, 2.MD.2,
2.MD.4, 2.MD.5, 2.MD.6

1

2

3

4

5

6

7

8

9

10

EA

1 Assessment

10

11

Students draw critical connections between measurement units and the base ten system, which will help them deeply understand the relationship between tens and ones, and between meters and centimeters.

Curriculum Study PD: Prior to teaching this module, complete the full G2M2 Curriculum Study Session — Overview, Fluency, Word Problem, Small Group Lessons (~60 minutes)

G2M3

Counting and Place Value

2.NBT.1, 2.NBT.2,
2.NBT.3, 2.MD.8, 2.NBT.A,
2.NBT.4, 2.OA.1, 2.NBT.8

1	2	3	4	5	6	7	8	9	10
MA	11	12	13	14	15	16	17	X	19
20	EA	X							

2 Assessments

19

21

Students expand their place value understanding to more abstract concepts, like centimeters, ones and tens, and their understanding of the base ten systems with hundreds.

Curriculum Study PD: Prior to teaching this module, complete the full G2M3 Curriculum Study Session — Overview, Fluency, Word Problem, Small Group Lessons (~60 minutes)

G2M4

Add, Subtract, and Solve

2.OA.1, 2.NBT.5, 2.NBT.8,
2.NBT.9, 2.NBT.7, 2.NBT.6

1	2	3	4	5	6	7	8	9	10
11	12	13	14	15	16	MA	17	18	19
20	21	22	23	24	25	26	27	28	X
X	31	EA							

2 Assessments

29

31

Students use their understanding of base ten to dive into decomposing and composing in addition and subtraction for numbers up to 200.

Curriculum Study PD: Prior to teaching this module, complete the full G2M4 Curriculum Study Session — Overview, Fluency, Word Problem, Small Group Lessons (~60 minutes)

G2M5

Add and Subtract Big Numbers

2.NBT.7, 2.NBT.8, 2.NBT.9

1	2	3	4	5	6	7	8	9	10
11	12	MA	13	14	15	16	17	18	19
20	EA								

2 Assessments

20

22

Students continue their work towards mastering flexible addition and subtraction by using numbers up to 1,000 and increasing the focus on efficiency and checking their work.

Curriculum Study PD: Prior to teaching this module, complete the full G2M5 Curriculum Study Session — Overview, Fluency, Word Problem, Small Group Lessons (~60 minutes)

G2M6

Equal Groups

2.OA.4, 2.NBT.2, 2.NBT.6, 2.G.2, 2.OA.3

1	2	X	4	5	6	7	X	9	MA
10	X	12	13	14	15	X	17	18	19
20	EA								

2 Assessments

16

18

Students are introduced to the important idea that numbers other than 1, 10 and 100 can serve as units, which prepares them for 3rd grade multiplication, fractions and algebra.

Curriculum Study PD: Prior to teaching this module, complete the full G2M6 Curriculum Study Session — Overview, Fluency, Word Problem, Small Group Lessons (~60 minutes)

G2M7

Length, Money, and Data

2.MD.6, 2.NBT.5, 2.MD.8, 2.NBT.2, 2.MD.1, 2.MD.3, 2.MD.4, 2.MD.5, 2.NBT.4

1	2	X	4	5	6	7	X	9	10
X	12	13	MA*	14	15	X	17	X	19
20	21	EA*	X	23	24	25	X		

Students apply their addition and subtraction strategies to a variety of contexts, including length, money, and data.

Curriculum Study PD: Prior to teaching this module, complete the full G2M7 Curriculum Study Session — Overview, Fluency, Word Problem, Small Group Lessons (~60 minutes)

2 Assessments

12

14

* Exclude problem 3 from the MA

* Exclude problem 4 from the EA

G2M8

Shapes, Time, and Fractions

2.G.1, 2.MD.1, 2.G.3, 2.MD.7, 2.NBT.2, 2.NBT.5, 2.NBT.6

1	2	3	X	5	X	7	8	MA	X
10	11	12	13	X	15	16	EA		

Students develop an understanding of the unit fraction—the most important building block of fractions—as equal parts of the whole.

Curriculum Study PD: Prior to teaching this module, complete the full G2M8 Curriculum Study Session — Overview, Fluency, Word Problem, Small Group Lessons (~60 minutes)

2 Assessments

12





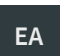
14

Total

14
Assessments

139
Lessons

153
Instruction Days

-  Grade 2 lesson: daily fluency, guided practice and assessment
-  Grade 1 lesson: daily fluency, guided practice and assessment
-  Excluded lessons for the 2020-21 school year (can be completed outside of core math instruction)
- X** Omitted curriculum lesson
-  **MA** Mid-Mission Assessment (any adjustments needed for the assessments due to excluded lessons are noted in each mission)
-  **EA** End-of-Mission Assessment (any adjustments needed for the assessments due to excluded lessons are noted in each mission)